



CRUISING THE IONIAN

SY MOONDUSTER

WINSTON URPANI
&
JOANNA VASSALLO

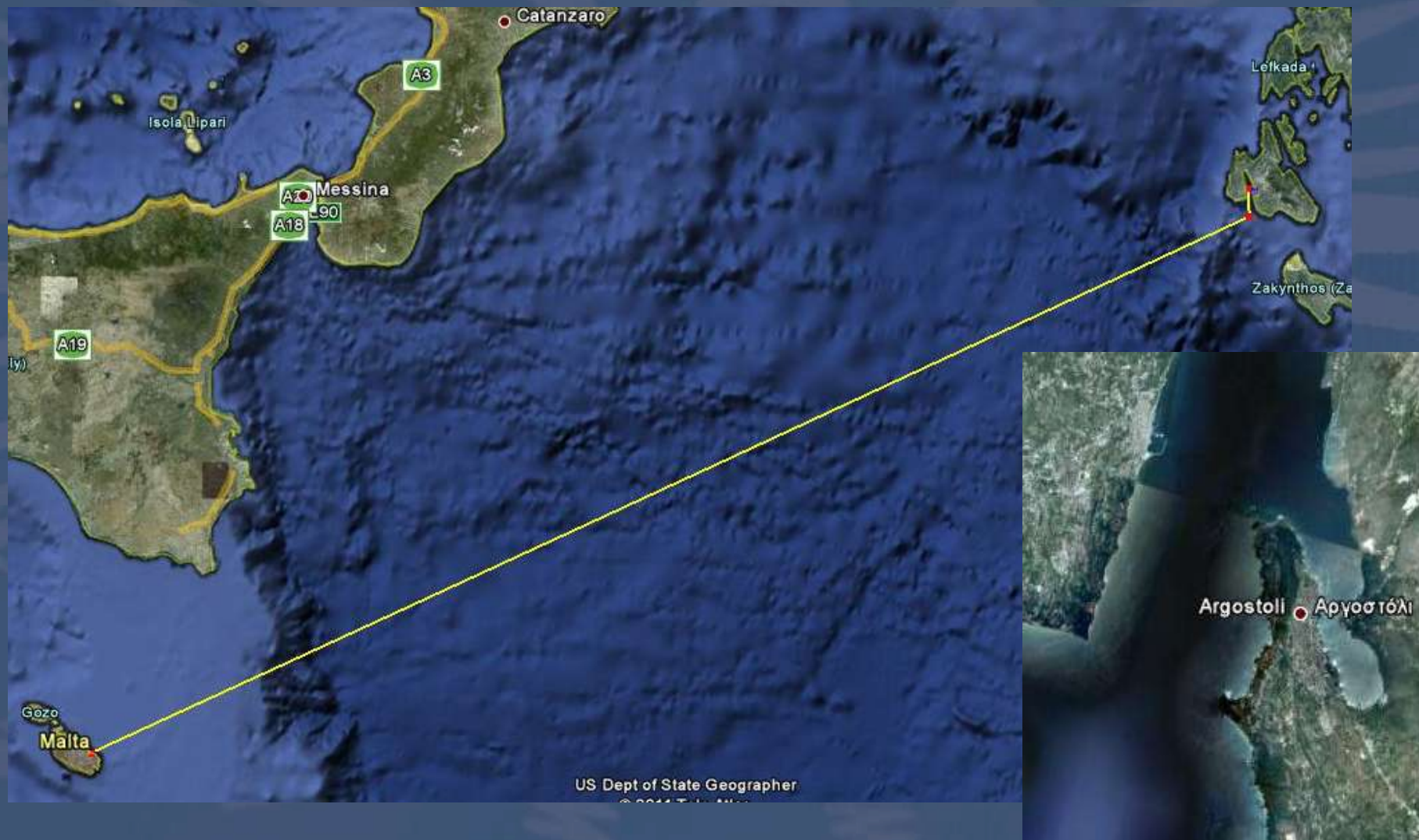


IONIAN ISLANDS





IONIAN ISLANDS – 320 NAUTICAL MILES





TRIP SUGGESTIONS – CHECK LIST

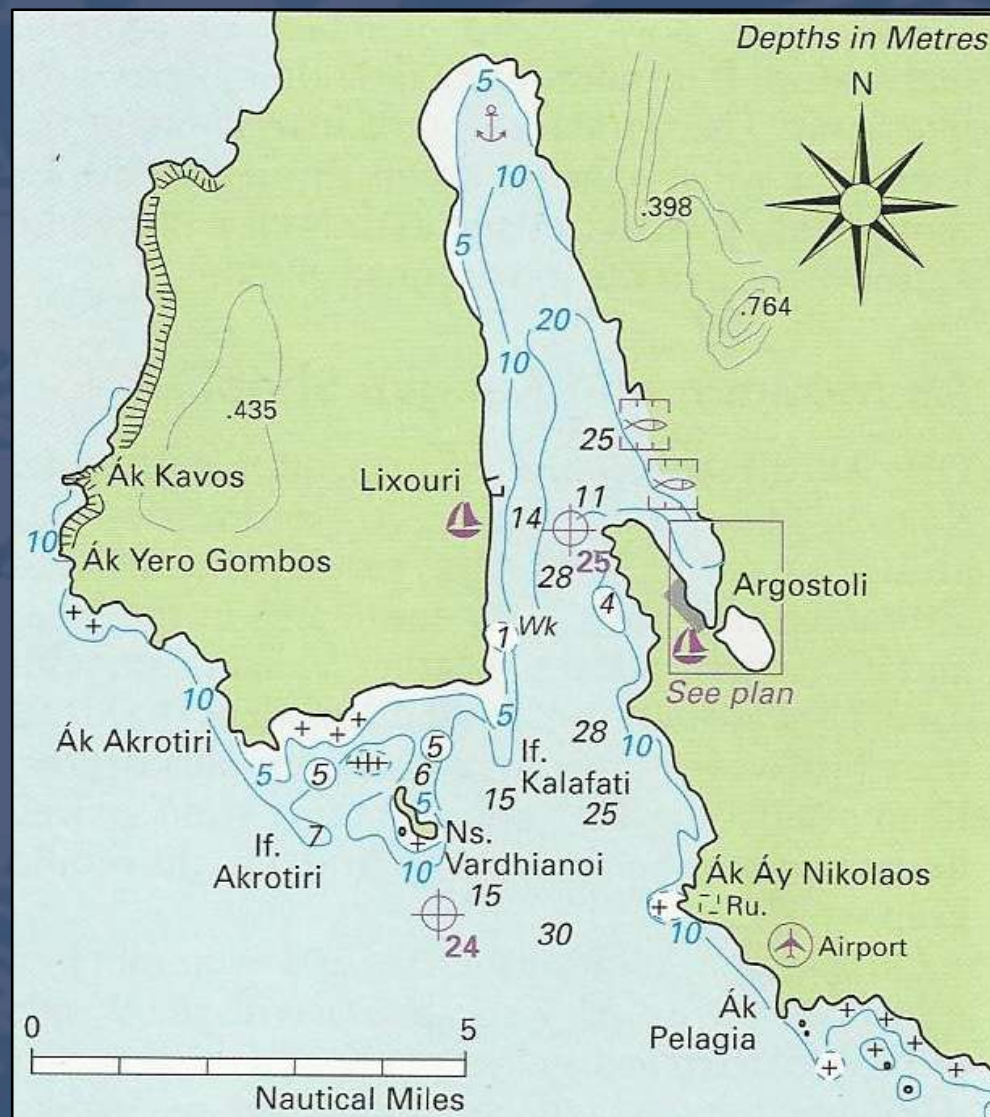
- File a crew list before you leave for immigration control
- Passports and IDs
- Food for the journey (prepared)
- Bad weather gear - Nights can be cold
- Fishing gear
- Cash money!
- Large bimini
- Dinghy
- Extra anchor – Very Important!
- Mooring Springs
- 2x 20meter mooring lines with rope protectors
- Snorkels





ARGOSTOLI

- Capital & main harbour in SW Cephalonia
- Stern-to on anchor (by road)
- Free water
- No electricity
- EUR 9 a night
- Showers available
- On approach take care of:
 - Reef SE of Ak Pelagia
 - Reef W of AK Ay Nikolaos





ARGOSTOLI MARINA

- Prevailing wind blows down to harbour
- Marina on East side of the arm running south to Argostoli Docks
- Lights at entrance are conspicuous.





ARGOSTOLI

Light house on Ak Ay Theodori



Moored at Argostoli marina





VIEW OF LUXOURI CITY FROM BERTH



18/03/2011

Cruising the Ionian

8



LEAVING ARGOSTOLI FOR LUXOURI





ARGOSTOLI



18/03/2011

Cruising the Ionian

10



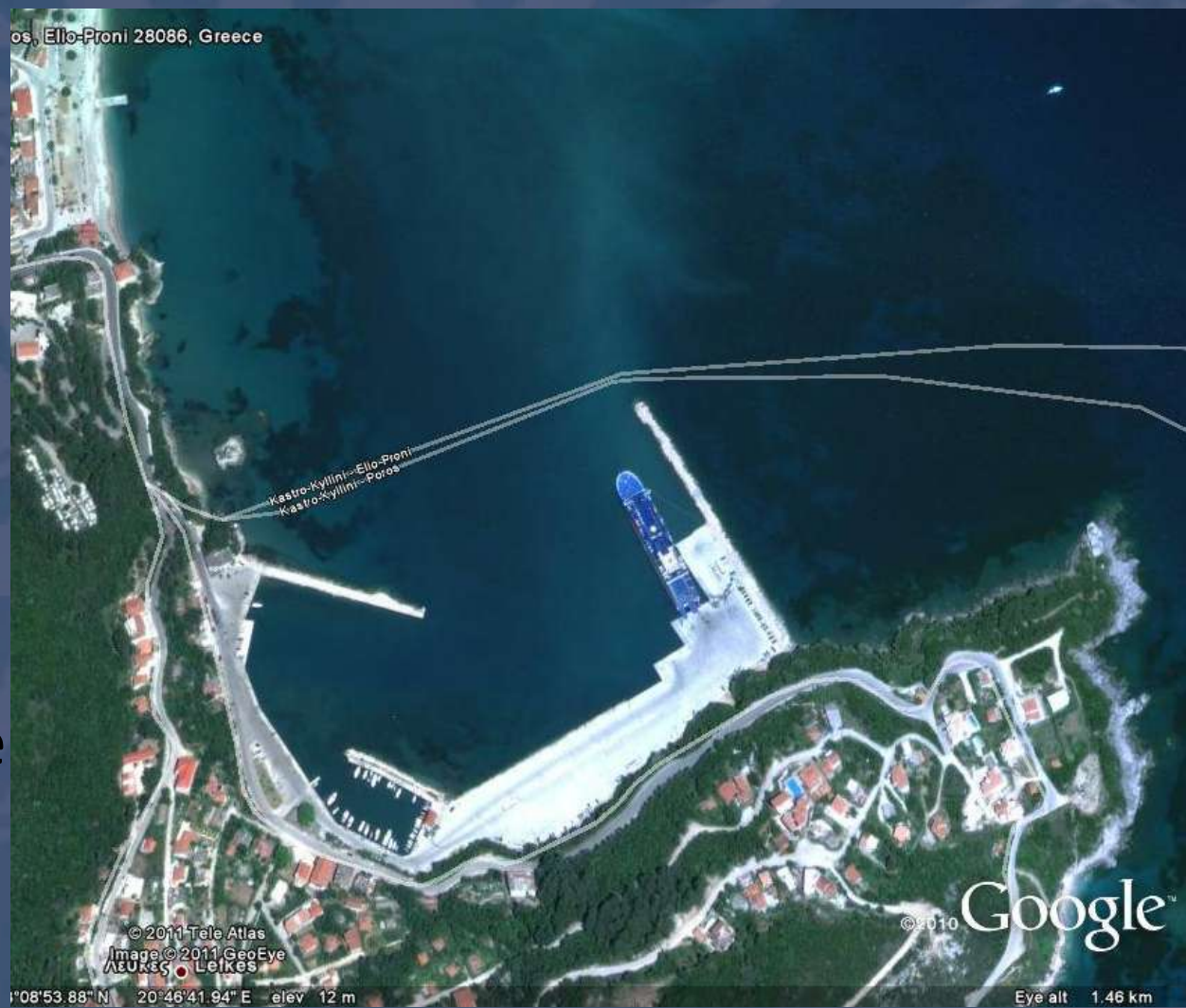
ARGOSTOLI





POROS - CEPHALONIA

- Small harbour
- Very pretty town
- EUR 8/night
- Stern-to on anchor
- Free water
- Showers available





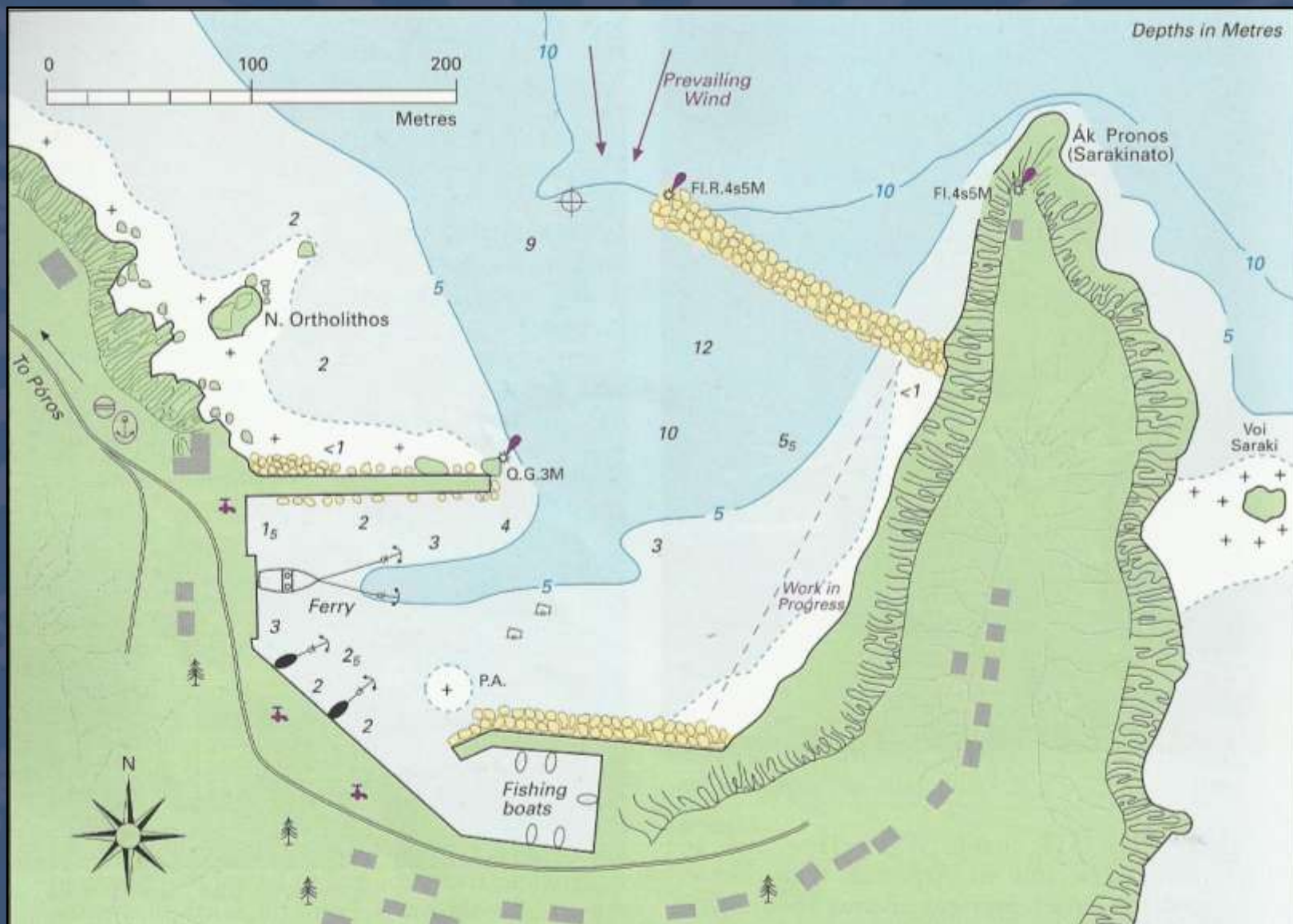
POROS HARBOUR

- Approaching:
 - From N buildings are easily identified
 - From S village and harbour not seen until you sail around Ak Poros.
- Keep clear of ferry berths
- Wash & undertow from ferry props – keep pulled well off the quay
- Last ferry stays overnight
 - bow lines across to buoys
 - This restricts access for yachts
 - Take care if entering at night





POROS HARBOUR





POROS



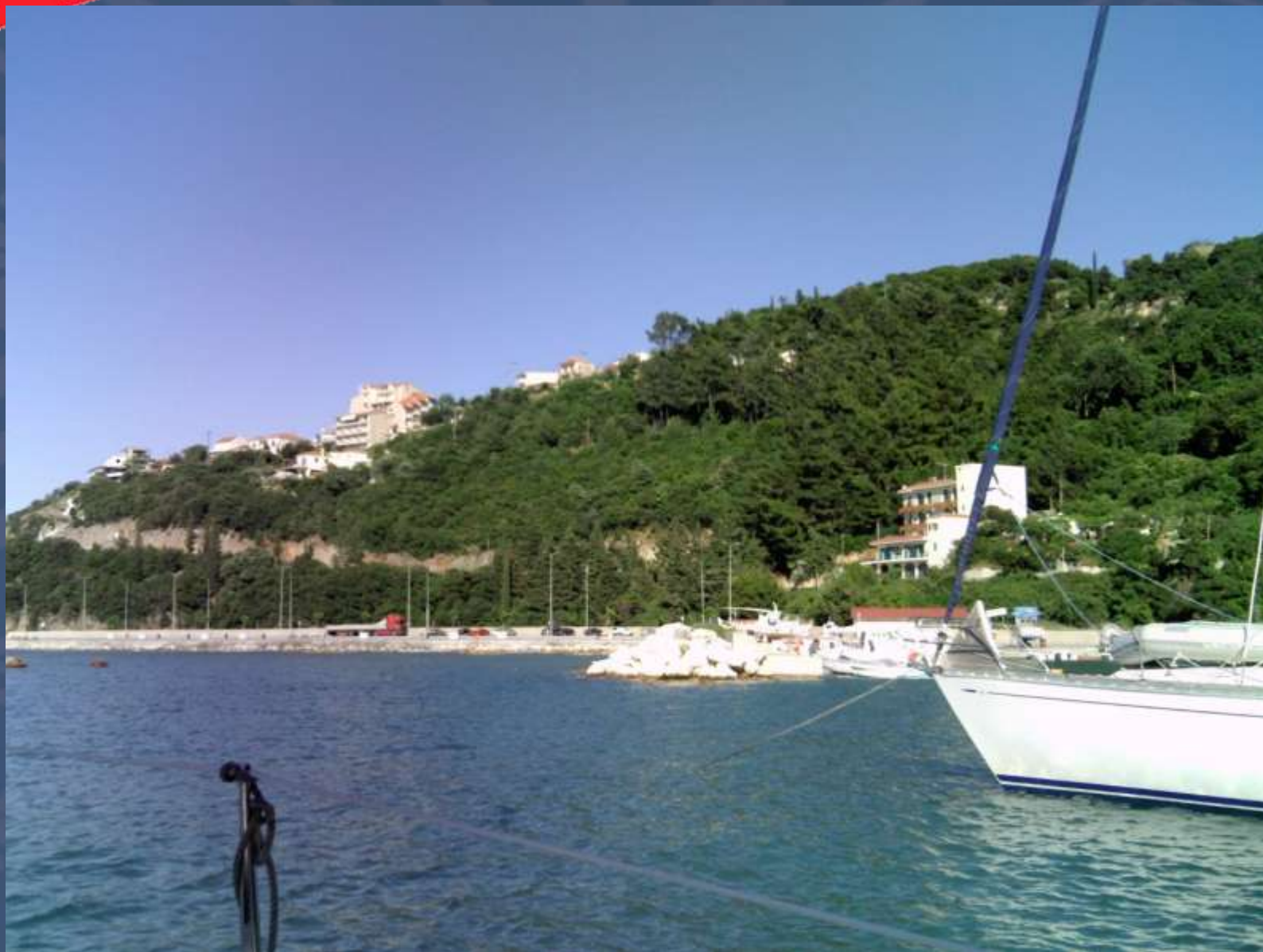
18/03/2011

Cruising the Ionian

15



POROS



18/03/2011

Cruising the Ionian

16



POROS



18/03/2011

Cruising the Ionian

17



POROS



18/03/2011

Cruising the Ionian

18



KIONI - ITHAKA

- Very pretty village
- Houses built around steep slopes of the bay
- No facilities
- Showers available



18/03/2011

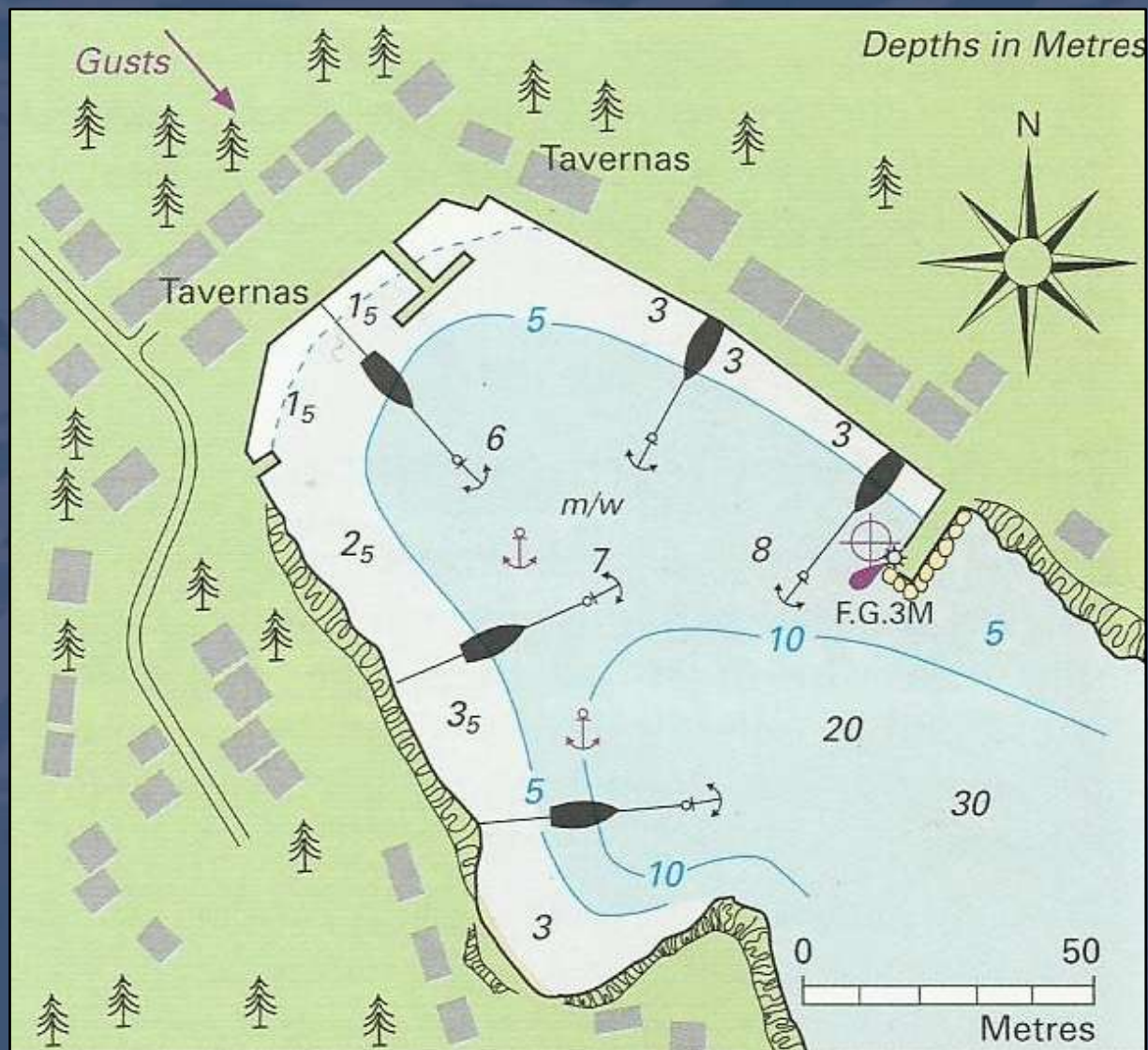
Cruising the Ionian

19



KIONI HARBOUR

- Approaching:
 - From N & E look for 3 windmills on end of AK Psigadhi
 - From S not easily seen unless hugging coast
- Severe gusts out of the bay with prevailing Westerlies
- Stern-to on anchor
- Quay is deep 10m+
- Wash & undertow from ferry props bothersome – keep pulled well off the quay
- 20meter mooring lines with rope protectors
- Use mooring springs





KIONI



18/03/2011

Cruising the Ionian

21



KIONI



18/03/2011

Cruising the Ionian

22



KIONI



18/03/2011

Cruising the Ionian

23



KIONI



18/03/2011

Cruising the Ionian

24



KIONI



18/03/2011

Cruising the Ionian

25



KIONI



18/03/2011

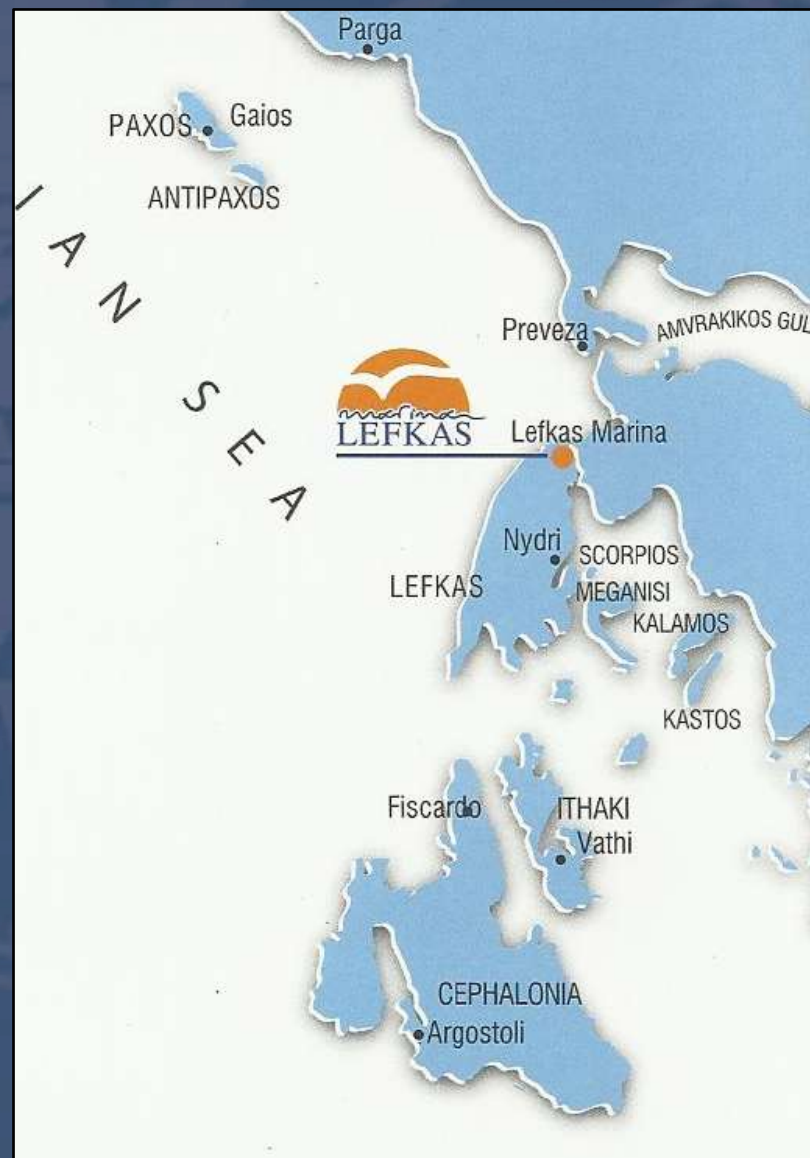
Cruising the Ionian

26



LEFKAS - MARINA

- Fourth largest of Ionian Islands
- Lefkas marina situated on East side of island
- Very modern marina
- EUR 50 not including showers
- Fuel available
- Lazy Lines





LEFKAS



18/03/2011

Cruising the Ionian

28



KASTOS - LEFKAS





LEFKAS MARINA



18/03/2011

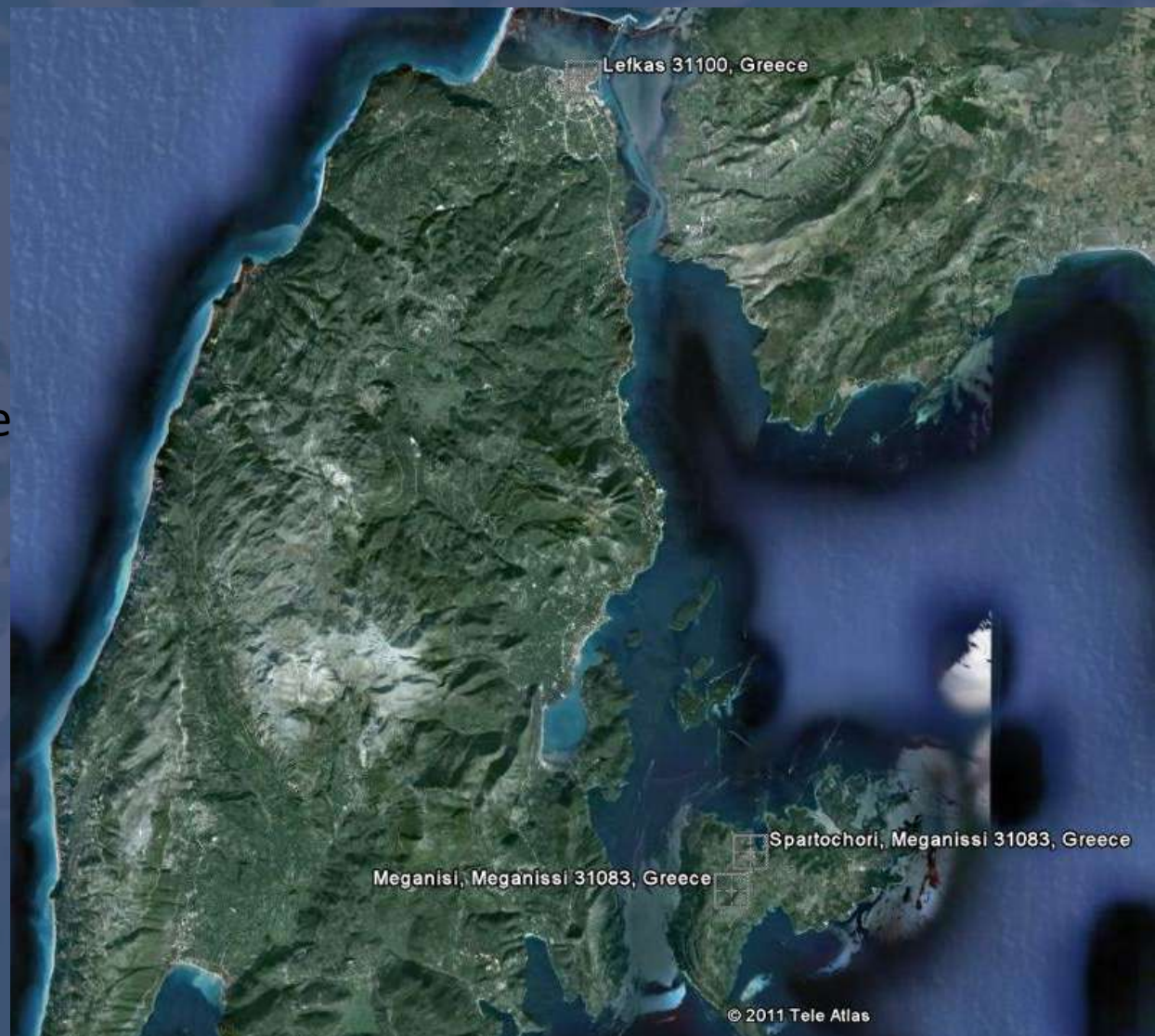
Cruising the Ionian

30



SPARTAKHORI - MEGANISI

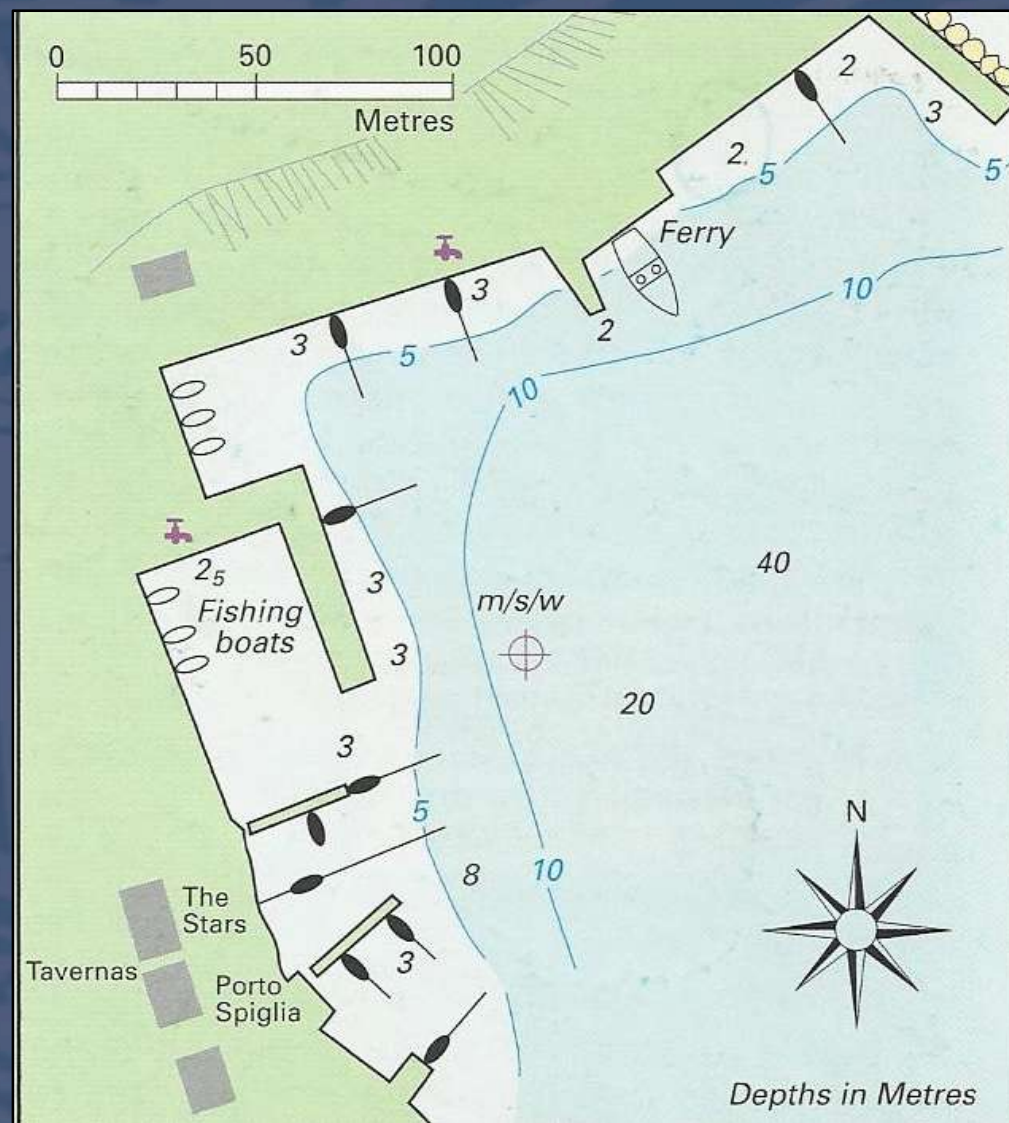
- Must go place!
- Free lazy lines/electricity /water when eating at Porto Spilla taverna
 - Likes Maltese people
- Showers and washing machine service available
- Very good food
 - Fresh lobster (choose your lobster from the cage)
- Quaint Town uphill – a must to visit
- Wonderful view of Nidri, Madhouri, Skorprios and surrounding mountains
- Fascinating warren of alleys and lanes





SPARTAKHORI HARBOUR

- Approaching:
 - Spartakhori is a large bay located on the NW of Meganisi
 - Harbour is on the W side of the bay
- Stern-to on anchor
- Popular harbour (busy)
- Keep clear of ferry berths
- Depths drop off quickly from quay – anchor drop 12–20m
- Taverna quay or catwalks have laid moorings for pick up. If you use mooring you are normally expected to use the taverna!





PART OF SPARTAKHORI HARBOUR



18/03/2011

Cruising the Ionian

33



SPARTAKHORI



18/03/2011

Cruising the Ionian

34



SPARTAKHORI



18/03/2011

Cruising the Ionian

35



SPARTAKHORI



18/03/2011

Cruising the Ionian

36



SPARTAKHORI



18/03/2011

Cruising the Ionian

37



VATHI- MEGANISI

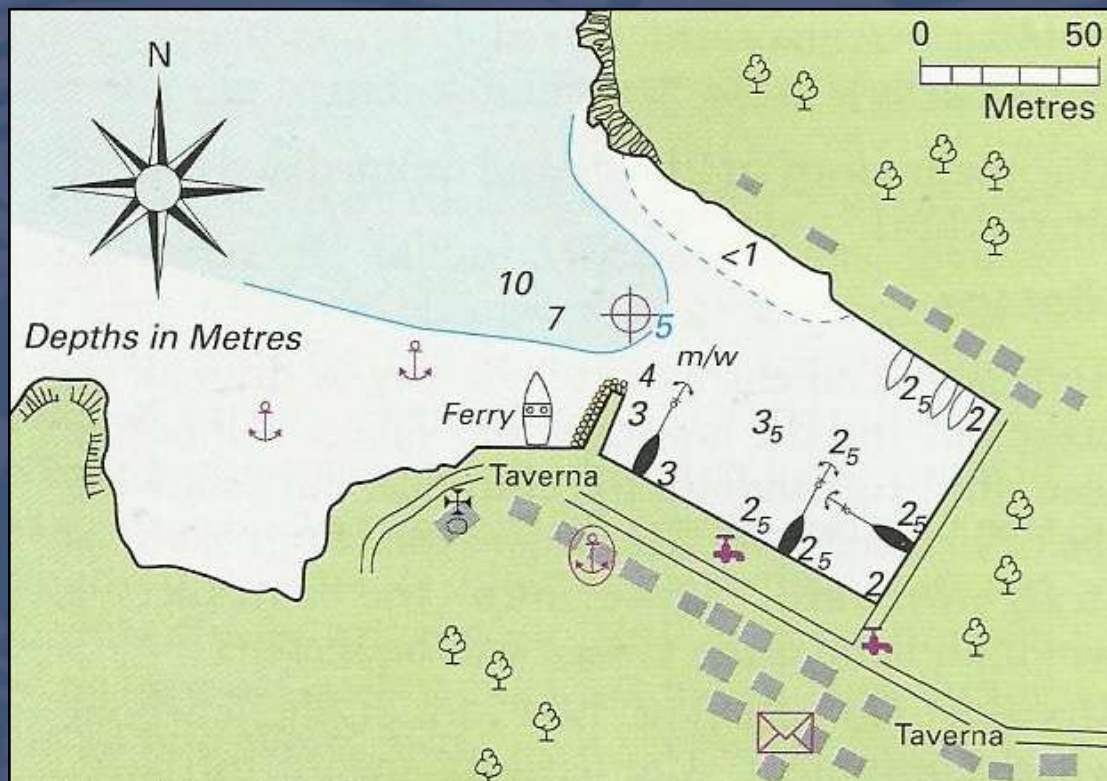
- Main port of Meganisi
- Immediately E of Spartakhor
- Very nice place to visit
- No bank/credit cards – Cash only!
- Free mooring w/ lazy lines if dinning at certain Tavernas
- Electricity – EUR 5
- Water – EUR 2
- New marina
 - Pay by Sq Meter
 - Eg: 10m = EUR 30
 - Showers available





VATHI PORT

- Approaching:
 - Following the North coast of Meganisi will make a straight entrance to the bay.
- Stern-to on anchor in harbour, or,
- Anchor in coves on W & E side of bay
- Depths 10+
- Good shelter from day breeze
- Night breeze from the NE makes W side of bay uncomfortable and untenable
- Karnayio Taverna on S side on entrance has a sturdy catwalk with about 20 berths.
- 2 – 3m depths at most berths





VATHI



18/03/2011

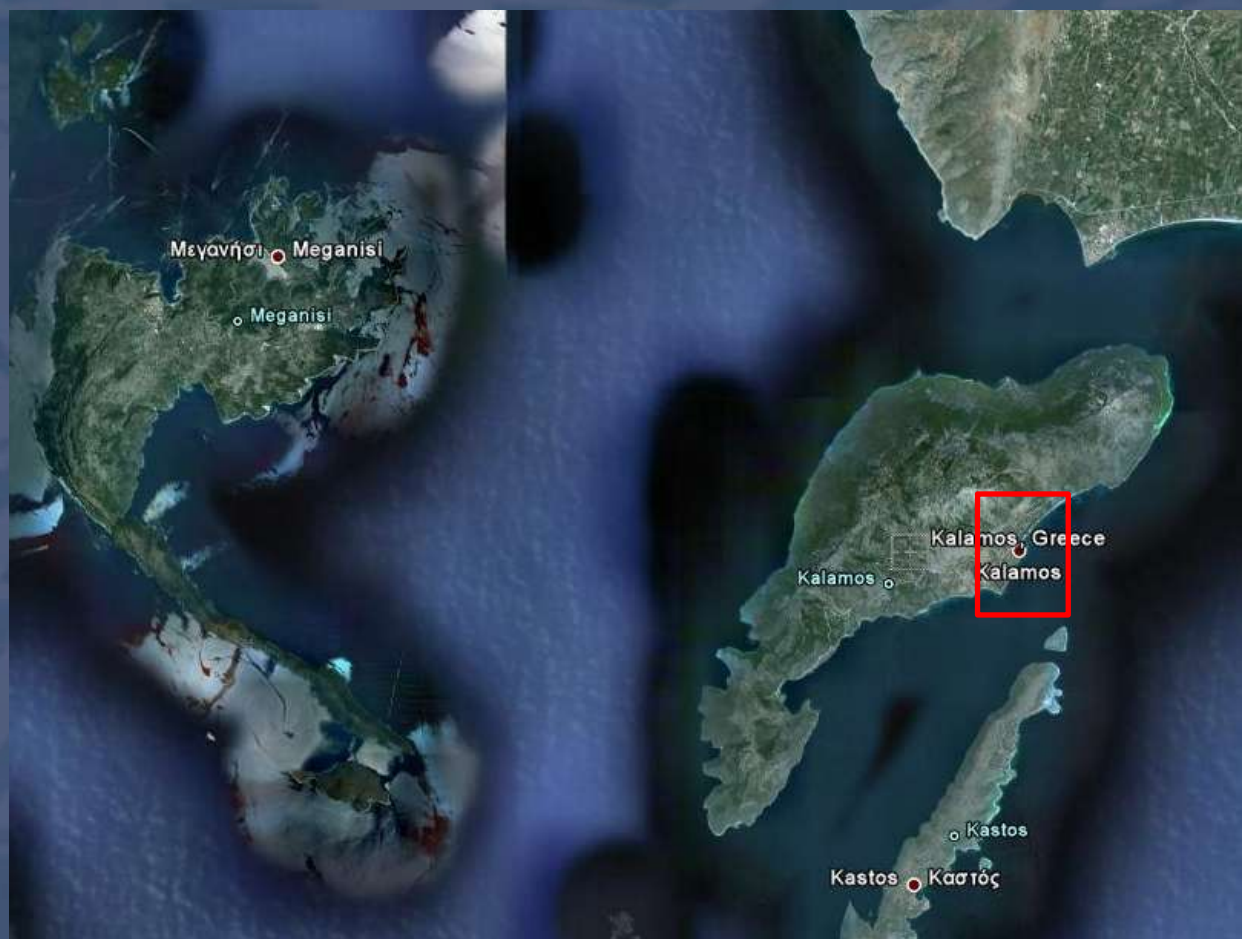
Cruising the Ionian

40



KALAMOS

- Small village – serves as the island capital on the East side.
- Marina with no facilities
- Stern-to on anchor
- George will help !!
- No credit cards
- No banks





PORT KALAMOS

- Approaching:
 - Proceed up Stenon Kalamou between Kastos and Kalamos.
 - Look for mills on the coast
- Busy port
- Berth on breakwater or the N end of the W quay.
- Keep an eye for ballast extending out from the quay.
- Anchor in coves on W & E side of bay





KALAMOS



18/03/2011

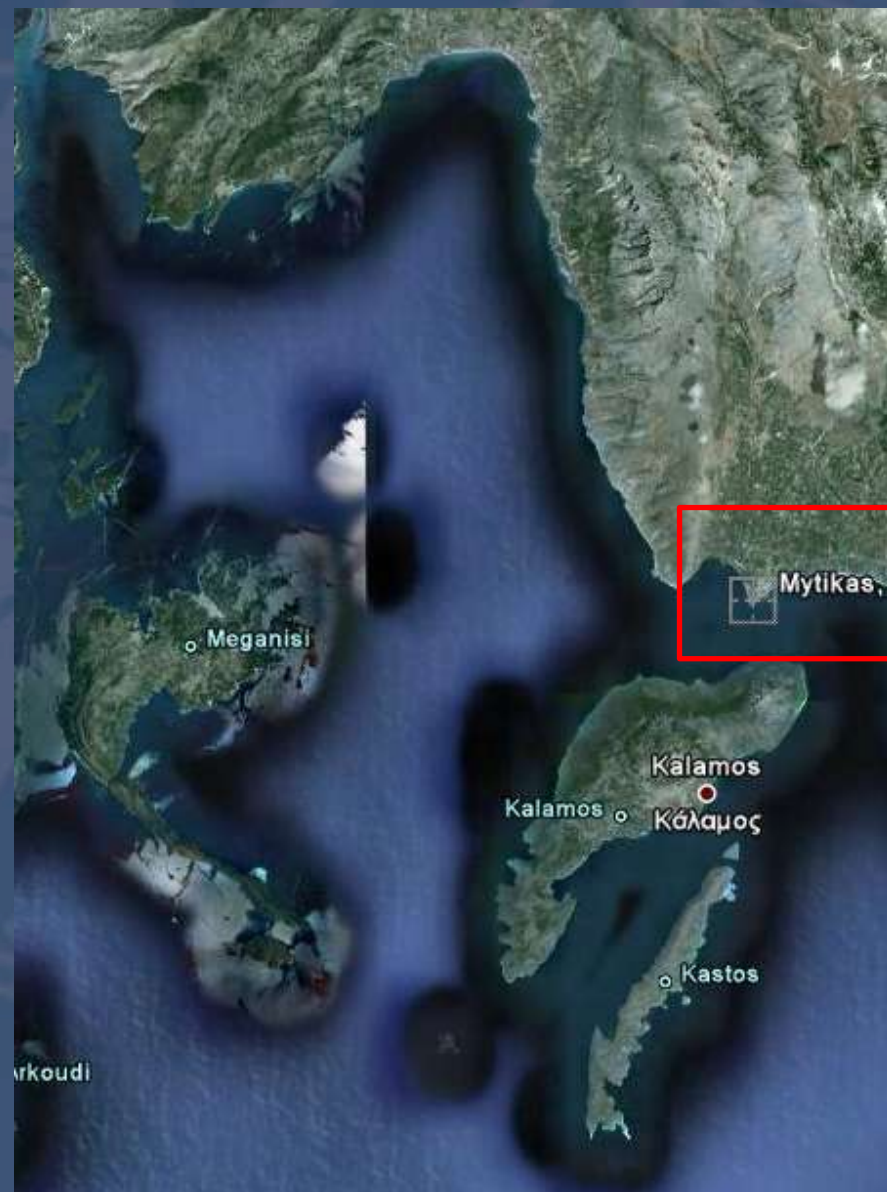
Cruising the Ionian

43



MITIKA - MAINLAND

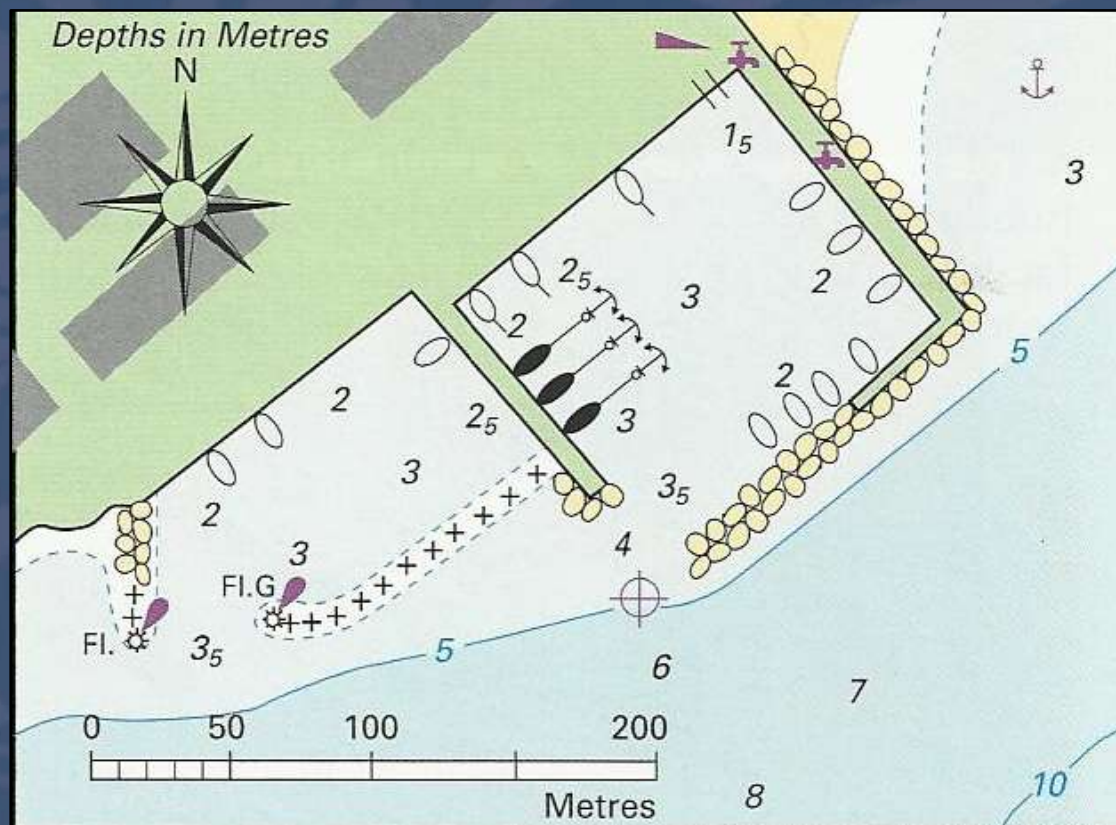
- ATM available – at last!!
- Free berthing
- Stern-to on anchor
- Tiny marina
- Small cute town
- Beautiful views of Kalamos island
- Seashell – Cafe/restaurant





PORT MITIKA

- Approaching:
 - From Kalamos Island head for the NE end
 - 2 small basins lie on E side of AK Mitikas
- In calm water you can anchor on the W side of the village
- Both basins are small
- Limited manoeuvrability
- 2 – 3m depths
- Provide good shelter





MITIKA





MITIKA



18/03/2011

Cruising the Ionian

47



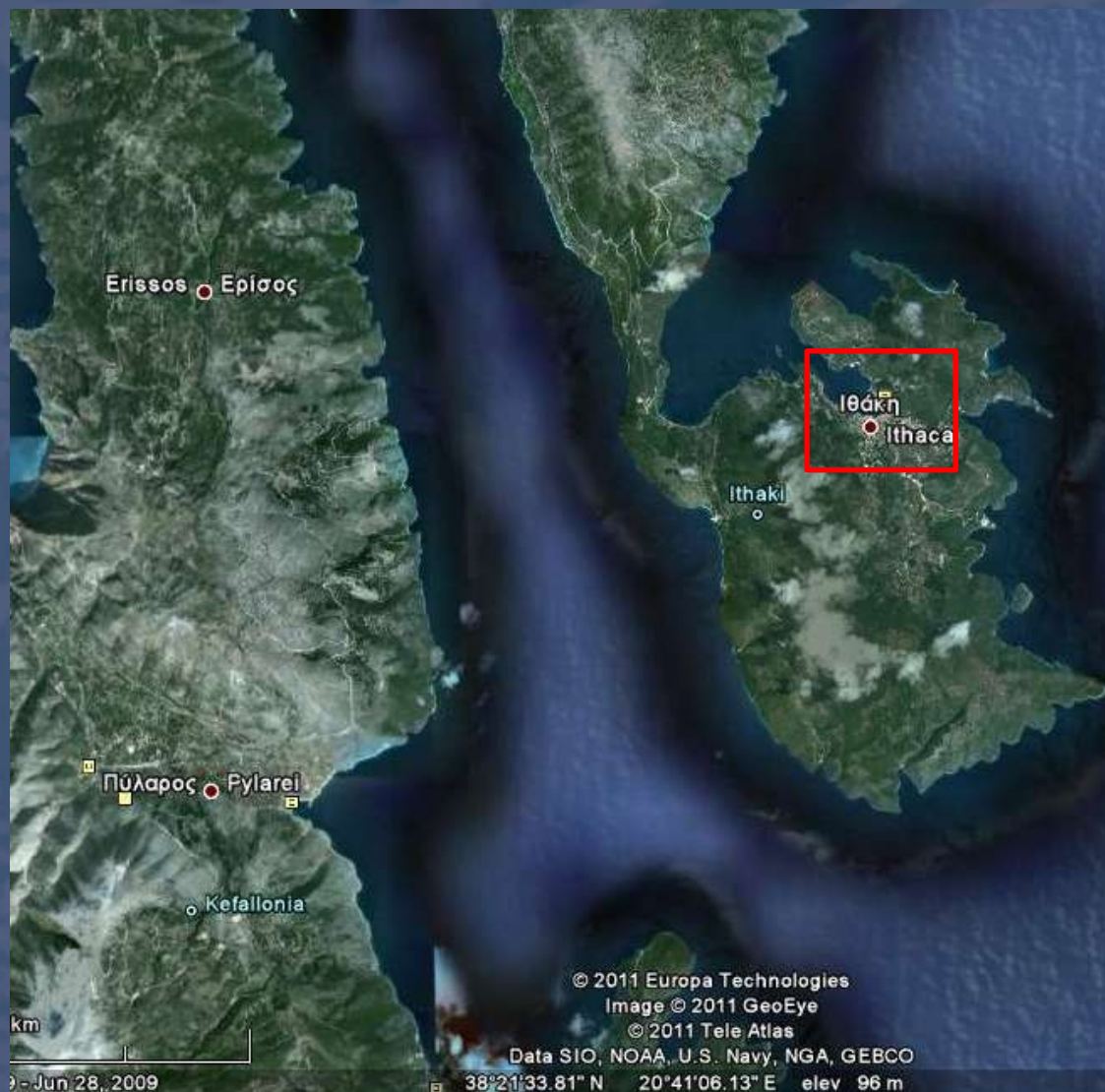
MITIKA





VATHI - ΙΘΑΚΑ

- Large Port – No Facilities
- Fuel available on pontoon
- Demitri's Taverna on North Quay
- Approaching:
 - Town not seen until in bay
 - Chapel and light tower on Ak Andreou easily seen
 - Take care of prevailing wind gusts from the NW
 - Makes berthing and anchoring difficult
 - Keep an eye for ferries





VATHI ITHAKA PORT





VATHI ITHAKA

FROM N QUAY



18/03/2011

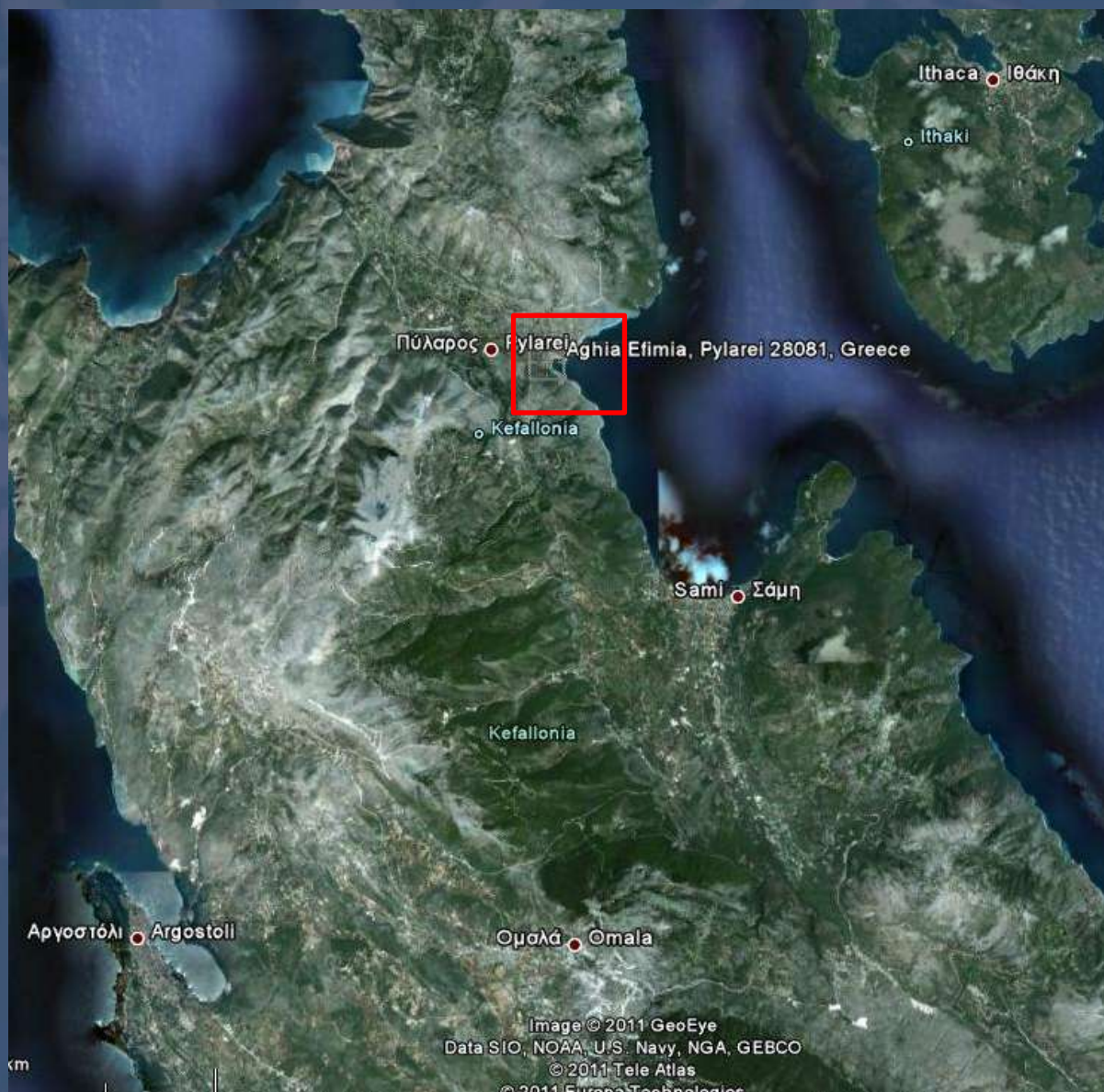
Cruising the Ionian

51



AY EUFIMIA - CEFHALONIA

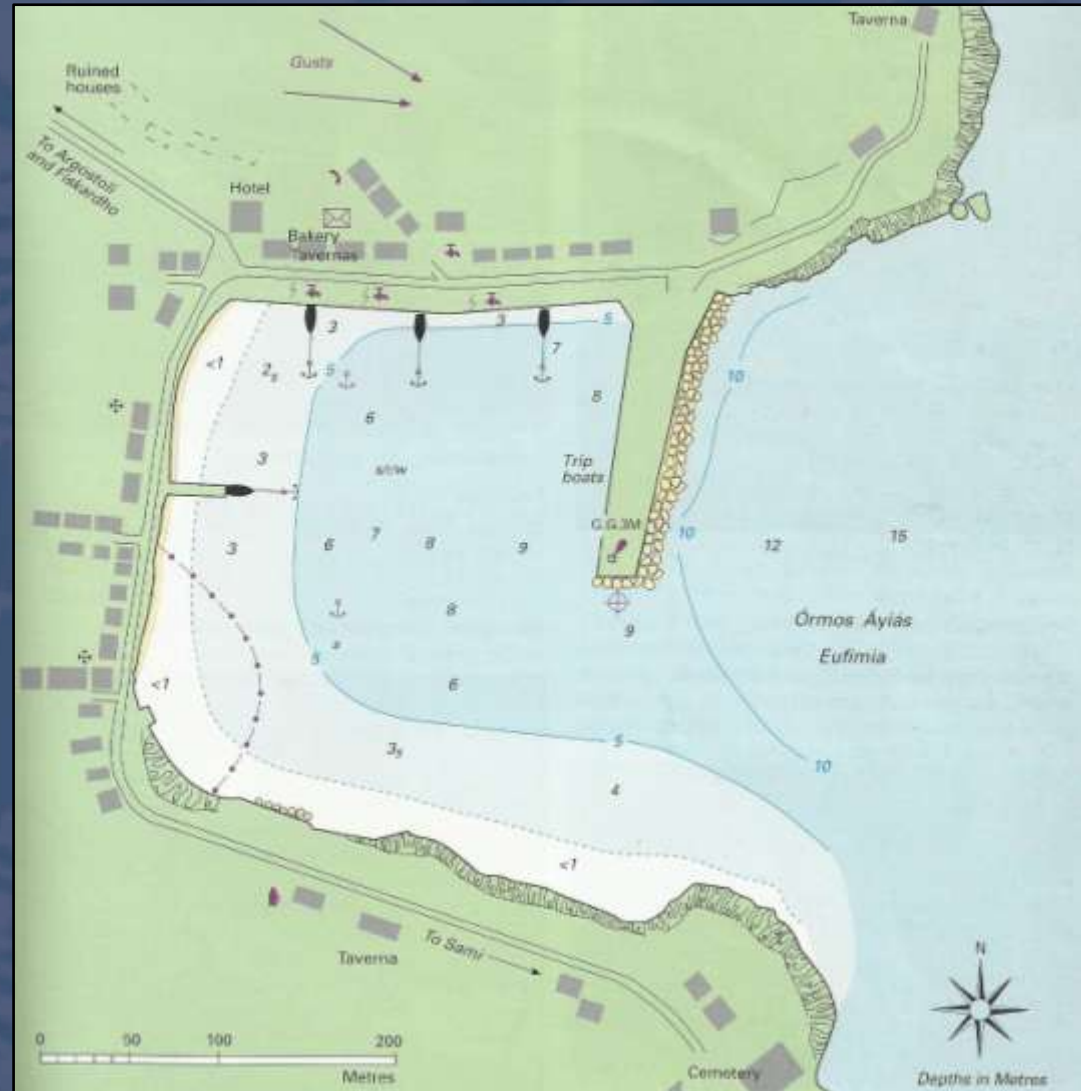
- Large bay and harbour lying on same parallel as the S end of Ithaca
- Busy villages
- Electricity & Water EUR 18/day
- Stern- to on anchor
- Showers available
- Lots of taverns and supermarkets





AY EUFIMIA HARBOUR

- Approaching:
 - Coming from N you will not see the village and harbour until Ak Agriossiki
 - From E & SE easy seen
 - Strong gusts with prevailing wind out of bay
 - Harbour is on the W side of the bay
- Stern-to on anchor
- Prevailing wind gusts onto the harbour so make sure to anchor properly.
- Having a second anchor would help remove doubts !





AY EUFIMIA





AY EUFIMIA



18/03/2011

Cruising the Ionian

55



FISKARDHO - CEPHALONIA

- Must go place!
- St. Tropez of the Ionian
- Pontoons
- Water and Electricity w/ EUR 5 card
- Beautiful & Classy
- Butane available
- Stern- to on anchor on pontoons – EUR 15/day
- Showers available
- Bakeries available





FISKARDHO HARBOUR

- Approaching:
 - Sail N through the Ithaca Channel
 - Old Venetian lighthouse on N side of entrance can be seen
- Take care on the E end of quay where ballasting extends underwater for a short distance
- Shallow depths at N end
- Popular harbour (busy)
- Keep clear of ferry berths
- Good shelter in the bay





FISKARDHO



18/03/2011

Cruising the Ionian

59



FISKARDHO





FISKARDHO



18/03/2011

Cruising the Ionian

61



FISKARDHO



18/03/2011

Cruising the Ionian

62



VASILIKI - LEFKADA

- Wind Surfing Mecca
- 30 Kts winds
- 2.5 meter depth
- Free berthing
- Stern-to
- No electricity
- Water available @ EUR 2
- Pretty town
- Large sandy / pebble beach
- Lots of taverns
- Lots of shopping outlets





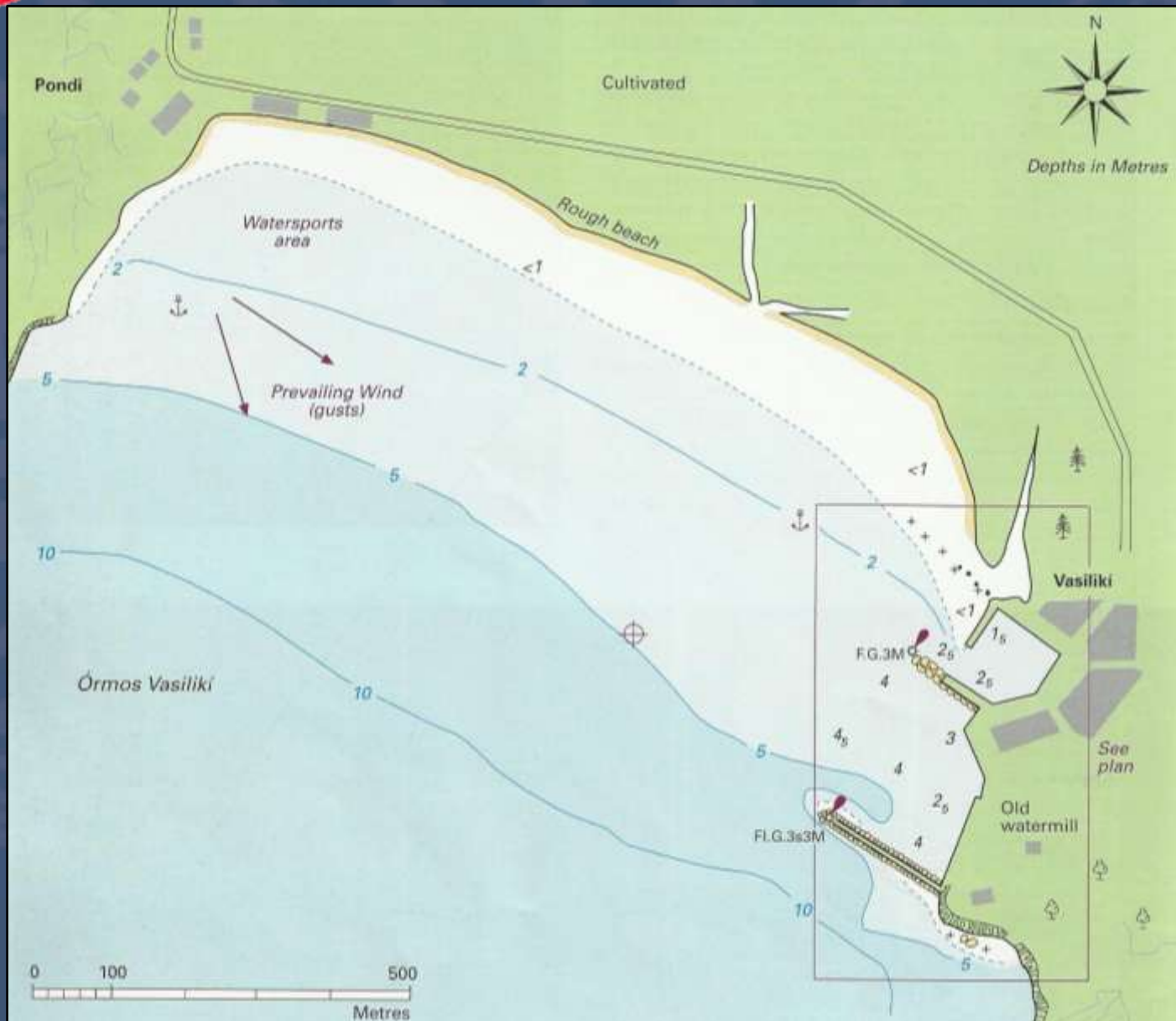
VASILIKI HARBOUR

- Approaching:
 - The white light house on Ak Dhoukato easily identified.
 - Entering from NW village will be seen
 - Entering from E village will not be visible until inside the bay
- Prevailing wind tends to gust so take extra care
- Sailboards off the beach and at the head of the bay. Use caution
- Possible to anchor at head of bay in 2 - 5m depth
- Harbour provides better shelter from wind
- Berthing stern-to on W and S quay.
- In unsettled weather harbour is uncomfortable and some berths are untenable.





VASILIKI





VASILIKI



18/03/2011

Cruising the Ionian

66



VASILIKI





IOANNINA

- The largest city of Epirus
- NW Greece
- 500m above sea level
- Historic area
- Ali Pasha used to live here
- Worth visiting if sailing in the Corfu area





IOANNINA



18/03/2011

Cruising the Ionian

69

MARITIME TRAFFIC DOCUMENT

ΕΛΛΗΝΙΚΗ ΔΗΜΟΚΡΑΤΙΑ
HELLENIC REPUBLIC
ΥΠΟΥΡΓΕΙΟ ΕΜΠΟΡΙΚΗΣ ΝΑΥΤΙΛΙΑΣ
ΛΙΓΑΙΟΥ ΚΑΙ ΝΗΣΙΩΤΙΚΗΣ ΠΟΛΙΤΙΚΗΣ
MINISTRY OF MERCANTILE MARINE,
THE AEGEAN AND ISLAND POLICY
ΛΙΜΕΝΙΚΗ ΑΡΧΗ ΧΕΡΣΟΝΗΣΟΣ
ΧΕΡΣΟΝΗΣΟΣ PORT AUTHORITY

ΑΡΙΘ. ΔΕΛΤΙΟΥ 207042
DOCUMENT NUMBER 207042

ΔΕΛΤΙΟ ΚΙΝΗΣΗΣ ΠΛΟΙΟΥ ΑΝΑΨΥΧΗΣ
PRIVATE PLEASURE MARITIME TRAFFIC DOCUMENT

ΟΝΟΜΑ ΠΛΟΙΟΥ: ΜΟΝΟ-ΒΟΥΤΑ ΣΗΜΑΙΑ: ΜΑΥΤΑ
NAME OF CRAFT: FLAG:

ΛΙΜΗΝ & ΑΡΙΘΜΟΣ ΜΗΤΡΟΛΟΓΙΟΥ: ΒΑΛΕΤΑ - 04951
PORT AND NUMBER OF REGISTRY:

ΔΣ: 827 Κ.Ο.Χ.: 827 ΟΛΚΟ ΜΗΚΟΣ: 30.52
CALL SIGN: G.R.T.: G.T.:

ΤΥΠΟΣ ΠΛΟΙΟΥ: 119
TYPE OF CRAFT:

ΑΡΙΘΜΟΣ, ΤΥΠΟΣ ΚΑΙ ΕΠΙΔΥΝΑΜΗ ΜΗΧΑΝΟΣ:
ENGINE, NUMBER, TYPE AND H.P.:

ΠΑΙΟΚΤΗΤΗΣ: WINSTON WARAMI ΔΙΕΥΘΥΝΣΗ ΚΑΤΟΙΚΙΑΣ: ΧΕΡΣΟΝΗΣΟΣ
NAME OF OWNER: HOME ADDRESS:

ΤΗΛΕΦΩΝΟ: 79061811 FAX: - E-MAIL: -
TELEPHONE:

ΑΦΜ: - ΔΟΥ: - ΑΔΤ ή ΔΙΑΒΑΤΗΡΙΟΥ: 191637
TAX NUMBER: TAX OFFICE: I.D. or PASSPORT NUMBER:

ΠΑΙΟΚΤΗΣ ΚΥΒΕΡΝΗΤΗΣ: WINSTON WARAMI ΔΙΕΥΘΥΝΣΗ ΚΑΤΟΙΚΙΑΣ: ΒΑΛΕΤΑ
CAPTAIN/SKIPPER: HOME ADDRESS:

ΑΦΜ: - ΔΟΥ: - ΑΔΤ ή ΔΙΑΒΑΤΗΡΙΟΥ: 191639
TAX NUMBER: TAX OFFICE: I.D. or PASSPORT NUMBER:

ΧΡΗΣΤΗΣ: - ΔΙΕΥΘΥΝΣΗ ΚΑΤΟΙΚΙΑΣ: -
USER: HOME ADDRESS:

ΤΗΛΕΦΩΝΟ: - FAX: - E-MAIL: -
TELEPHONE:

ΑΦΜ: - ΔΟΥ: - ΑΔΤ ή ΔΙΑΒΑΤΗΡΙΟΥ: -
TAX NUMBER: TAX OFFICE: I.D. or PASSPORT NUMBER:

ΕΚΠΡΟΣΩΠΙΟΣ ΠΑΙΟΚΤΗΤΗ: - ΔΙΕΥΘΥΝΣΗ ΚΑΤΟΙΚΙΑΣ: -
OWNER'S REPRESENTATIVE: HOME ADDRESS:

ΤΗΛΕΦΩΝΟ: - FAX: - E-MAIL: -
TELEPHONE:

ΑΦΜ: - ΔΟΥ: - ΑΔΤ ή ΔΙΑΒΑΤΗΡΙΟΥ: -
TAX NUMBER: TAX OFFICE: I.D. or PASSPORT NUMBER:

ΤΟΠΟΣ: ΑΠΟΚΡΑΤΙΑ ΗΜΕΡΟΜΗΝΙΑ: 31/03/2010
PLACE: DATE:

ΘΕΩΡΗΣΕΙΣ ΛΙΜΕΝΙΚΩΝ ΑΡΧΩΝ

ΚΑΤΑΠΛΟΥΣ ON ARRIVAL	ΑΠΟΠΛΟΥΣ ON DEPARTURE	ΚΑΤΑΠΛΟΥΣ ON ARRIVAL	ΑΠΟΠΛΟΥΣ ON DEPARTURE
ΛΙΜΕΝΑΣ ΠΡΟΕΛΕΥΣΗΣ: <u>ΒΑΛΕΤΑ</u> PORT ARRIVED FROM:	ΛΙΜΕΝΑΣ ΠΡΟΟΡΙΣΜΟΥ: <u>-</u> PORT OF DESTINATION:	ΛΙΜΕΝΑΣ ΠΡΟΕΛΕΥΣΗΣ: <u>-</u> PORT ARRIVED FROM:	ΛΙΜΕΝΑΣ ΠΡΟΟΡΙΣΜΟΥ: <u>-</u> PORT OF DESTINATION:
ΑΡΙΘΜΟΣ ΕΠΙΒΑΙΝΟΝΤΩΝ: <u>102141</u> NUMBER OF PERSONS ON BOARD	ΑΡΙΘΜΟΣ ΕΠΙΒΑΙΝΟΝΤΩΝ: <u>-</u> NUMBER OF PERSONS ON BOARD	ΑΡΙΘΜΟΣ ΕΠΙΒΑΙΝΟΝΤΩΝ: <u>-</u> NUMBER OF PERSONS ON BOARD	ΑΡΙΘΜΟΣ ΕΠΙΒΑΙΝΟΝΤΩΝ: <u>-</u> NUMBER OF PERSONS ON BOARD
ΤΟΠΟΣ - ΗΜΕΡΟΜΗΝΙΑ: <u>ΒΑΛΕΤΑ</u> DATE - PLACE	ΤΟΠΟΣ - ΗΜΕΡΟΜΗΝΙΑ: <u>-</u> DATE - PLACE	ΤΟΠΟΣ - ΗΜΕΡΟΜΗΝΙΑ: <u>-</u> DATE - PLACE	ΤΟΠΟΣ - ΗΜΕΡΟΜΗΝΙΑ: <u>-</u> DATE - PLACE
ΤΣΥ	ΤΣΥ	ΤΣΥ	ΤΣΥ
ΚΑΤΑΠΛΟΥΣ ON ARRIVAL	ΑΠΟΠΛΟΥΣ ON DEPARTURE	ΚΑΤΑΠΛΟΥΣ ON ARRIVAL	ΑΠΟΠΛΟΥΣ ON DEPARTURE
ΛΙΜΕΝΑΣ ΠΡΟΕΛΕΥΣΗΣ: <u>ΑΠΟΚΡΑΤΙΑ</u> PORT ARRIVED FROM:	ΛΙΜΕΝΑΣ ΠΡΟΟΡΙΣΜΟΥ: <u>ΒΑΣΙΛΙΚΗ</u> PORT OF DESTINATION:	ΛΙΜΕΝΑΣ ΠΡΟΕΛΕΥΣΗΣ: <u>-</u> PORT ARRIVED FROM:	ΛΙΜΕΝΑΣ ΠΡΟΟΡΙΣΜΟΥ: <u>-</u> PORT OF DESTINATION:
ΑΡΙΘΜΟΣ ΕΠΙΒΑΙΝΟΝΤΩΝ: <u>-03-</u> NUMBER OF PERSONS ON BOARD	ΑΡΙΘΜΟΣ ΕΠΙΒΑΙΝΟΝΤΩΝ: <u>-03-</u> NUMBER OF PERSONS ON BOARD	ΑΡΙΘΜΟΣ ΕΠΙΒΑΙΝΟΝΤΩΝ: <u>-</u> NUMBER OF PERSONS ON BOARD	ΑΡΙΘΜΟΣ ΕΠΙΒΑΙΝΟΝΤΩΝ: <u>-</u> NUMBER OF PERSONS ON BOARD
ΤΟΠΟΣ - ΗΜΕΡΟΜΗΝΙΑ: <u>ΔΙΣΚΑΡΟΣ 28-06-10</u> DATE - PLACE	ΤΟΠΟΣ - ΗΜΕΡΟΜΗΝΙΑ: <u>ΔΙΣΚΑΡΟΣ 30-06-10</u> DATE - PLACE	ΤΟΠΟΣ - ΗΜΕΡΟΜΗΝΙΑ: <u>-</u> DATE - PLACE	ΤΟΠΟΣ - ΗΜΕΡΟΜΗΝΙΑ: <u>-</u> DATE - PLACE
ΤΣΥ	ΤΣΥ	ΤΣΥ	ΤΣΥ
ΚΑΤΑΠΛΟΥΣ ON ARRIVAL	ΑΠΟΠΛΟΥΣ ON DEPARTURE	ΚΑΤΑΠΛΟΥΣ ON ARRIVAL	ΑΠΟΠΛΟΥΣ ON DEPARTURE
ΛΙΜΕΝΑΣ ΠΡΟΕΛΕΥΣΗΣ: <u>-</u> PORT ARRIVED FROM:	ΛΙΜΕΝΑΣ ΠΡΟΟΡΙΣΜΟΥ: <u>-</u> PORT OF DESTINATION:	ΛΙΜΕΝΑΣ ΠΡΟΕΛΕΥΣΗΣ: <u>-</u> PORT ARRIVED FROM:	ΛΙΜΕΝΑΣ ΠΡΟΟΡΙΣΜΟΥ: <u>-</u> PORT OF DESTINATION:
ΑΡΙΘΜΟΣ ΕΠΙΒΑΙΝΟΝΤΩΝ: <u>-</u> NUMBER OF PERSONS ON BOARD	ΑΡΙΘΜΟΣ ΕΠΙΒΑΙΝΟΝΤΩΝ: <u>-</u> NUMBER OF PERSONS ON BOARD	ΑΡΙΘΜΟΣ ΕΠΙΒΑΙΝΟΝΤΩΝ: <u>-</u> NUMBER OF PERSONS ON BOARD	ΑΡΙΘΜΟΣ ΕΠΙΒΑΙΝΟΝΤΩΝ: <u>-</u> NUMBER OF PERSONS ON BOARD
ΤΟΠΟΣ - ΗΜΕΡΟΜΗΝΙΑ: <u>-</u> DATE - PLACE	ΤΟΠΟΣ - ΗΜΕΡΟΜΗΝΙΑ: <u>-</u> DATE - PLACE	ΤΟΠΟΣ - ΗΜΕΡΟΜΗΝΙΑ: <u>-</u> DATE - PLACE	ΤΟΠΟΣ - ΗΜΕΡΟΜΗΝΙΑ: <u>-</u> DATE - PLACE
ΤΣΥ	ΤΣΥ	ΤΣΥ	ΤΣΥ



CONCLUSION: CHECK LIST

- File a crew list before you leave for immigration control
- Passports and IDs
- Food for the journey (prepared)
- Bad weather gear - Nights can be cold
- Fishing gear
- Cash money!
- Large bimini
- Dinghy
- Extra anchor – Very Important!
- Mooring Springs
- 2x 20meter mooring lines with rope protectors
- Snorkels
- Further reading:
 - IONIAN by Rod Heikell
 - Sixth Edition
 - ISBN:978-184623012-7

- In case of difficulty contact:

- **Aggelos Maliagros**

- Yacht Support Services
- 129 Antoni Tristi Street, Argostoli – Cephalonia
- Tel: 0030-26710 27621 and 27622
- Mob: 0030 6944577669
- E-mail: aggelos.kefalonias@hotmail.com
- Services rendered at:
 - Argostoli
 - Sami
 - Fiskardo



CRUISING THE IONIAN



THANK YOU FOR
YOUR TIME!